

# UNSEALED INTERCONNECTION SYSTEM

## Unsealed, Rugged, Flexible Connectors for Secure Vehicle Solutions

For inside-cabin, bulkhead and control-unit applications of on- and off- road vehicles, the Unsealed Interconnection System provides adaptable solutions with its diverse selection of unsealed, rugged and flexible connectors. Adopting TE Connectivity (TE)'s field proven AMP MCP 1.5K, 2.8, 6.3 & 9.5 contacts, PCON 12 terminals and the newest addition MCON 1.2 terminals, this series provides complete flexibility with the option to choose between 1-48 position connectors, for vibration at cabin level as well as high power applications – delivering safety and reliability, alongside overall cost-effectiveness.



### KEY BENEFITS

- Enable design flexibility with product offering 1 to 48 positions with a broad range of unsealed, rugged and flexible connectors
- Offer additional security with flame retardant V-O & reflow material options
- Facilitate contact alignment with integrated and separate secondary locking features
- Help prevent mismatch with up to 6-polarization and color key mating configurations available
- Reduce mating force with new design of the monoblock connector with lever
- Provide high reliability for long term use with vibration resistance for cabin

### Key Industries

Truck



Construction



Automotive



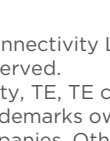
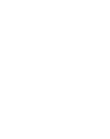
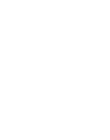
Bus



Agriculture

### Applications

Wire-to-Wire



## Get to Know Our Newest Products

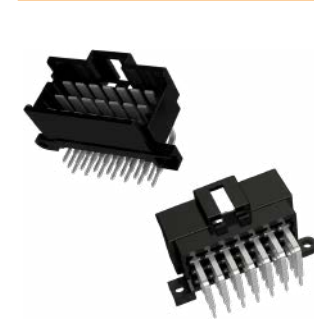


### Unsealed 36 Position 90° Header

- Improve security with flame retardant UL 94 V-O material
- Enhance robustness with screw hole design
- Reduce improper mating with 2 mechanical and color-coding options

Receptacle Housing	Position	Code	Color	Tab Housing	90° Header
2377780-1	36	A	Brown	2377783-1	1-2236715-1 *
2377780-2	36	B	Purple	2377783-2	1-2236715-2 *
2377780-3	36	C	Green	2377783-3	-
2377780-4	36	D	Blue	2377783-4	-

Receptacle Housing		Position	Code	Color	Tab Housing	90° Header
Carrier	Insert					
1-1718485-1	1718490-1 (9Pos)	36	A	Brown	1-2112891-1	1-2236715-1 *
1-1718485-2		36	B	Purple	1-2112891-2	1-2236715-2 *
1-1718485-3		36	C	Green	1-2112891-3	-
1-1718485-4		36	D	Blue	1-2112891-4	-
1-1718485-5		36	E	Gray	1-2112891-5	-
1-1718485-6		36	F	Orange	1-2112891-6	-



### Unsealed 21 Position 90° Header

- Improve security with flame retardant UL 94 V-O material
- Reflow capable material
- Enhance robustness with screw hole design

Receptacle Housing	Position	Code	Color	Tab Housing	90° Header
8-968975-1	21	A	Black	1-967630-1	2421721-1 *



### Unsealed AMP MCP 180° 25 & 36 Position Headers

- Improve security with flame retardant UL 94 V-O material
- Enhance robustness with screw hole and position pin design
- Reduce improper mating with 2 mechanical and color-coding options

Receptacle Housing	Position	Code	Color	Tab Housing	180° Header
1-1718484-1	25	A	Black	1-2112890-1	1-2236715-1 *
1-1718484-2	25	B	Grey	1-2112890-2	1-2236715-2 *
1-1718484-3	25	C	Light Blue	1-2112890-3	-
1-1718484-4	25	D	Yellow Green	1-2112890-4	-
2377780-1	36	A	Brown	2377783-1	1-2236715-1 *
2377780-2	36	B	Purple	2377783-2	1-2236715-2 *
2377780-3	36	C	Green	2377783-3	-
2377780-4	36	D	Blue	2377783-4	-

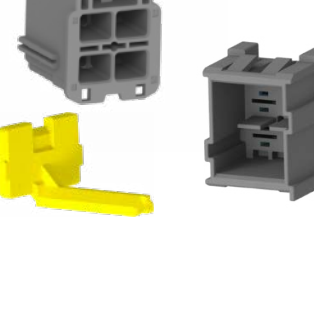
Receptacle Housing		Position	Code	Color	Tab Housing	180° Header
Carrier	Insert					
1-1718484-1	1718488-1 (7 Pos)	25	A	Black	1-2112890-1	1-670615-2 *
1-1718484-2		25	B	Grey	1-2112890-2	2-670615-2 *
1-1718484-3		25	C	Light Blue	1-2112890-3	-
1-1718484-4		25	D	Yellow Green	1-2112890-4	-
1-1718485-1	1718489-1 (18 Pos)	36	A	Brown	1-2112891-1	1-670615-1 *
1-1718485-2		36	B	Purple	1-2112891-2	2-1670615-1 *
1-1718485-3		36	C	Green	1-2112891-3	-
1-1718485-4		36	D	Blue	1-2112891-4	-
1-1718485-5		36	E	Grey	1-2112891-5	-
1-1718485-6		36	F	Orange	1-2112891-6	-



### Unsealed 21 Position Monoblock Connectors

- Contact alignment and retention with separate secondary locking feature (PN: 2379923-1) for receptacle and tab housing
- Reduce mating force with lever design
- Reduce improper mating with 4 mechanical and color-coding options
- Fit in existing bulkhead cut-outs and no design changes are needed

Receptacle Housing	Position	Code	Color	Tab Housing	Header
2379921-1 *	21	A	Black	2379922-1 *	-
2379921-2 *	21	B	Grey	2379922-2 *	-
2379921-3 *	21	C	Green	2379922-3 *	-
2379921-4 *	21	D	Blue	2379922-4 *	-



### Unsealed 4 Position AMP MCP 6.3 Connectors

- Reduce improper mating with 2 mechanical and color-coding options
- Contact alignment and retention with separate secondary locking feature (PN:2388168-1) for receptacle and tab housing
- Bulkhead connector design

Receptacle Housing	Position	Code	Color	Tab Housing	Header
2388170-1 *	4	A	Black	2388171-1 *	-
2388170-2 *	4	B	Grey	2388171-2 *	-



### Next Generation Unsealed 3 & 6 Position MCON 1.2 Connectors

- Increase density utilizing the MCON 1.2 contact
- Add stackable connector design for stand alone applications
- Wall mounting feature
- Contact alignment and retention with integrated secondary locking feature
- Reduce improper mating with 4 mechanical and color-coding options

Receptacle Housing	Position	Code	Color	Tab Housing	Header
2382877-1 *	3	A	Black	2382878-1 *	-
2382877-2 *	3	B	Grey	2382878-2 *	-
2382877-3 *	3	C	Green	2382878-3 *	-
2382877-4 *	3	D	Blue	2382878-4 *	-



### Next Generation Unsealed 16 Position MCON 1.2 Connectors

- Increase density utilizing the MCON 1.2 contact
- Bulkhead connector design
- Wall mounting feature
- Contact alignment and retention with integrated secondary locking feature
- Reduce improper mating with 4 mechanical and color-coding options

Receptacle Housing	Position	Code	Color	Tab Housing	Header
2382871-1 *	16	A	Black	2382874-1 *	-
2382871-2 *	16	B	Grey	2382874-2 *	-
2382871-3 *	16	C	Green	2382874-3 *	-
2382871-4 *	16	D	Blue	2382874-4 *	-

\* New Part Number